

BBS



50 TO 1,000 LBS

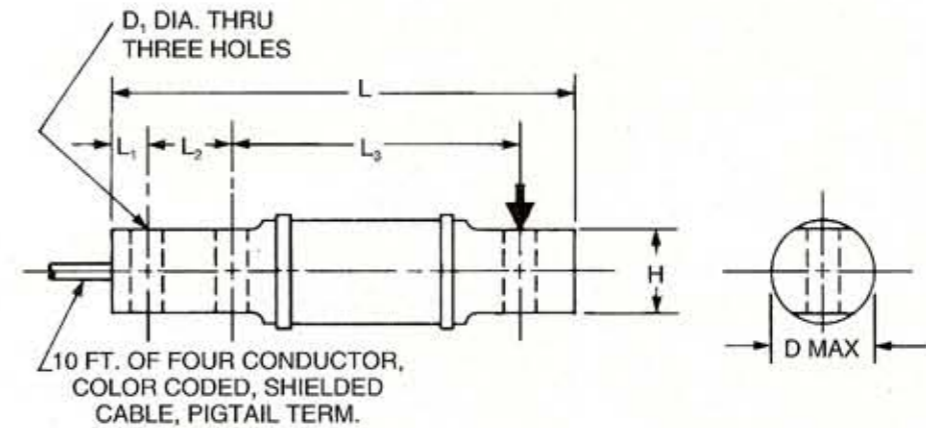
BBS
BENDING BEAM
50 TO 1,000 LBS

BENDING BEAM LOAD CELL



- RUGGED ALLOY STEEL CONSTRUCTION
- NICKEL PLATED SURFACES
- ENVIRONMENTAL PROTECTION
- LOW PROFILE

The BBS bending beam, built of rugged alloy steel and protected by nickel plating, has been used for more than a decade in applications requiring precision performance in adverse environments at a cost effective price.



TECHNICAL DATA

	50	100	200	250	500	1000
Rated Capacity (lbs)						
Rated Output (mV/V)				2.0 + 0.3/-0		
Combined Error Due to Non-Linearity and Hysteresis (%)				0.03		
Nonrepeatability (%)				0.01		
Creep in 20 min. (%)				0.03		
Zero Balance (%)				1.0		
Compensated Temp. Range (°F/°C)				+15 to +115/-10 to +45		
Temp. Effect:				Output (% of load/100°F) 0.08		
				Zero Balance (%/100°F) 0.15		
Terminal Resistance:				Input (ohms min.) 820		
				Output (ohms) 750 ± 10		
Excitation Voltage:				Maximum VDC or VAC rms 18		
Insulation Resistance (megohms min.)				5000 at 50 VDC		
Max. Load, Safe (%)				150		
Max. Load, Ultimate (%)				300		
Deflection at Rated Load (inches)	.015	.025	.030	.030	.020	.040
Weight (lbs.)				2.2		

CAPACITY (POUNDS)	DIMENSIONS (INCHES)						
	L	L ₁	L ₂	L ₃	H	D	D ₁
50 & 100	6	.38	.88	4.25	1.06	1.38	.31
200, 250, 500 & 1000	6.66	.50	1.12	4.25	1.06	1.38	.51

CABLE COLOR CODE	
+EXC	GREEN
-EXC	BLACK
+SIG	WHITE
-SIG	RED
SHIELD	YELLOW